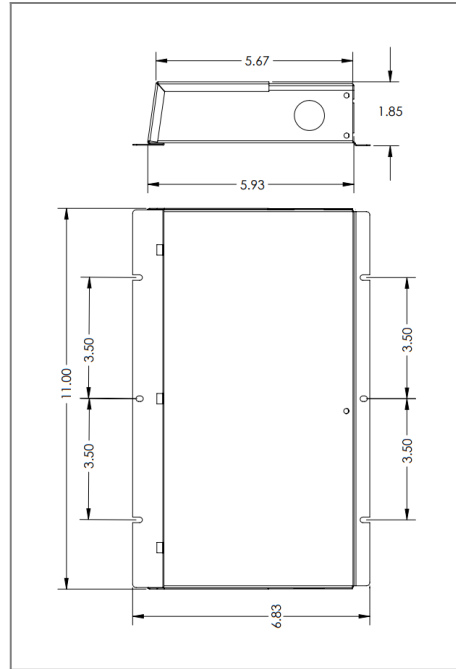


MLE180C2-12UD

Class 2 Electronic UNIV 5 in 1 dimming
Outdoor Black Powder Coated Steel Enclosure
Multi Circuit: **12VDC 800Hz**
Total Wattage: **180W max**
Input Voltage: **110-277V 50/60Hz**



Conforms to UL STD. 8750
Certified to CSA
STD. C22.2 No 250.13
model MLE180C2-12UD



Transformer

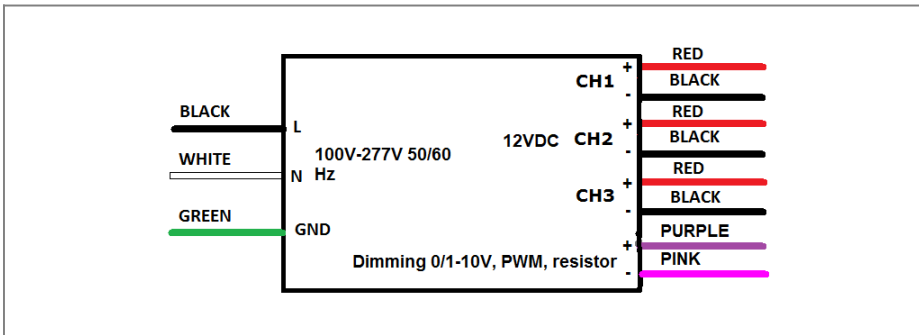
Dimmable with triac forward and reverse phase, 0/1-10V , resistor, PWM
Temperature class B(130°C)
Input leads are 18AWG 600V
Output leads are 16AWG 300V
Leads max. operational temperature is 105°C per circuit

Housing

The actual transformer 180W is encapsulated in the enclosure
The enclosure is Black Powder Coated Steel, NEMA 3R rated
Wiring compartment has 10 knockouts sizes for 3/8 inch screw cable connectors
Enclosure Temperature does not exceed 70°C at 45°C ambient and fully loaded
Dimensions (inch): H = 6.83, W = 11, D = 1.85
Weight (LBs): 4.4

Electrical Parameters

Input Voltage:	110-277V 50/60Hz
Max. input current at full load:	1.8A
Output voltage without load:	12.1VDC
Output voltage fully loaded:	12VDC
Max. Total Wattage:	180W Max. per circuit: 60W
Max. Output Current:	5A per circuit.
Efficiency:	90%
Load regulation:	1%
Ripple:	5%



Mailing Address: 646 Flinn Ave. Unit B, Moorpark , CA 93021 Tech support: Arik Nirenberg phone: 818-904-3309
Fax: 818 904 3327 info@emcod.com techsupport@emcod.com