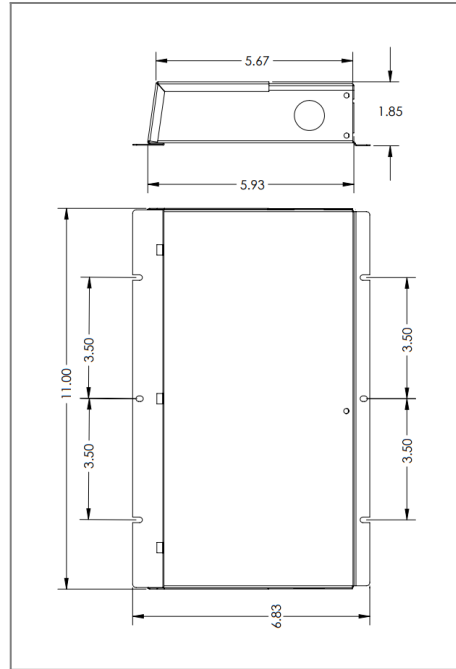


## MLE300C2-12UD

**Class 2 Electronic UNIV 5 in 1 dimming**  
 Outdoor Black Powder Coated Steel Enclosure  
 Multi Circuit: **12VDC 800Hz**  
 Total Wattage: **300W max**  
 Input Voltage: **110-277V 50/60Hz**



Conforms to UL STD. 8750  
 Certified to CSA  
 STD. C22.2 № 250.13  
 model MLE300C2-12DC-UD



### Transformer

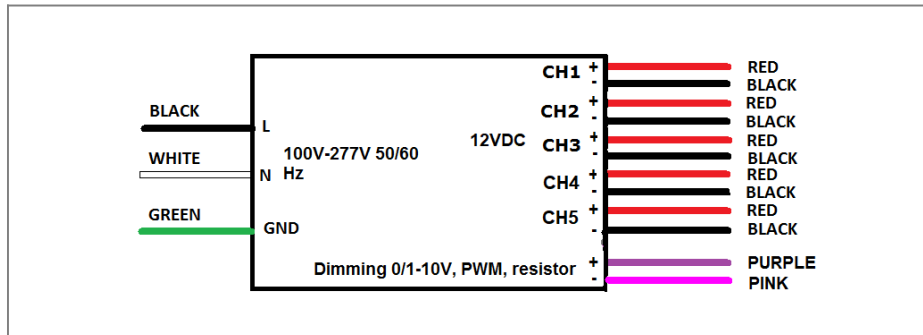
Dimmable with triac forward and reverse phase, 0/1-10V , resistor, PWM  
 Temperature class B(130°C)  
 Input leads are 18AWG 600V  
 Output leads are 16AWG 300V  
 Leads max. operational temperature is 105°C  
 per circuit

### Housing

The actual transformer 300W is encapsulated in the enclosure  
 The enclosure is Black Powder Coated Steel, NEMA 3R rated  
 Wiring compartment has 10 knockouts sizes for 3/8 inch screw cable  
 connectors  
 Enclosure Temperature does not exceed 70°C at 45°C ambient and fully  
 loaded  
 Dimensions (inch): H = 6.83, W = 11, D = 1.85  
 Weight (LBs): 4.4

### Electrical Parameters

Input Voltage:	<b>110-277V 50/60Hz</b>	
Max. input current at full load:	<b>3A</b>	
Output voltage without load:	<b>12.1VDC</b>	
Output voltage fully loaded:	<b>12VDC</b>	
Max. Total Wattage:	<b>300W</b>	Max. per circuit: <b>60W</b>
Max. Output Current:	<b>5A per circuit.</b>	
Efficiency:	<b>90%</b>	
Load regulation:	<b>1%</b>	
Ripple:	<b>5%</b>	



**Mailing Address: 646 Flinn Ave. Unit B, Moorpark , CA 93021 Tech support: Arik Nirenberg phone: 818-904-3309**  
**Fax: 818 904 3327 info@emcod.com techsupport@emcod.com**